

User Manual

DMPA Media Player Amplifier



Safety instructions

When using this electronic device, basic precautions should always be taken, including the following:

- 1 Read all instructions before using the product.
- 2 Do not use this product near water (e.g., near a bathtub, washbowl, kitchen sink, in a wet basement or near a swimming pool etc).
- 3 Use this device when you are sure that microphone receiver has a stable base and it is fixed securely.
- 4 This product, in combination with loudspeakers and amplifier may be capable of producing sound levels that could cause permanent hearing loss. Do not operate for a long period of time at a high volume level or at a level that is uncomfortable. If you experience any hearing loss or ringing in the ears, you should consult with otorhinolaryngologist.
- 5 The product should be located away from heat sources such as radiators, heat vents, or other devices that produce heat.
- 6 The product should be connected to a power supply that is described in the operating instructions or are marked on the product.
- 7 The power supply should be undamaged and never share an outlet or extension cord with other devices. Never leave device plugged into the outlet when it is not being used for a long period of time.
- 8 Care should be taken that objects do not fall into liquids and liquids would not be spilled on the device.
- 9 The product should be serviced by qualified service personnel if:
 - The power supply or the plug has been damaged.
 - Objects have fallen into or liquid has been spilled on the product.
 - The product has been exposed to rain.
 - The product has been dropped or the enclosure damaged.
- 10 There are some areas with high voltage inside, to reduce the risk of electric shock do not remove cover of the microphone receiver or power supply. The cover should be removed by the qualified personnel only.

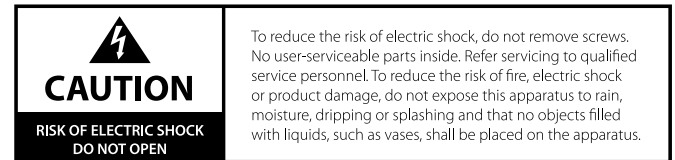


Table of contents

Before you start

Introduction.....	2
Features.....	2

Operation

Front panel.....	3
Rear panel.....	3
Media player functions.....	4
Front panel functions.....	5
Rear panel functions.....	5

Specifications

General specifications.....	6
-----------------------------	---

Before you start

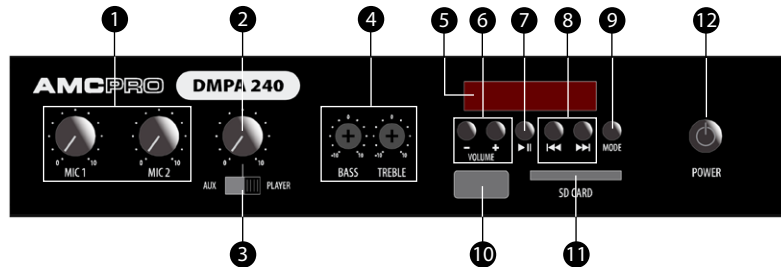
DMPA series device is a compact 1U half-rack size public address mixing amplifier, containing media player with AUX input, 2 microphone inputs, priority input control. This system is designed for small scale installations, such as gas stations, bars, convenience stores, where easy operation is appreciated.

FEATURES

- Compressed audio playback
- Supports up to 32GB USB flash and SD cards
- Internal 3 channel mixer for media player and microphone inputs 1 and 2
- Stereo RCA output
- Stereo RCA AUX input
- Mic 1 input with phoenix connector, phantom power and input priority
- Mic 2 input with XLR/TRS combo connector
- Amplifier output with phoenix connector and selectable voltage for Hi-Z or 4 Ω speaker installations.

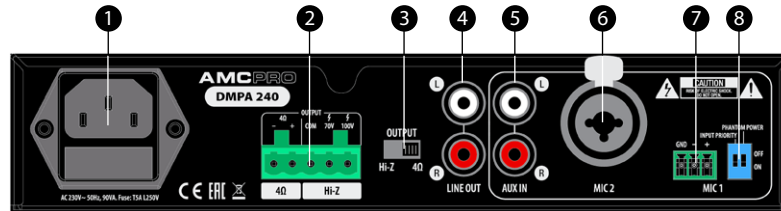
Operation

Front Panel



1. MIC 1 & MIC 2 volume | 2. Music volume | 3. Music source select switch | 4. Bass and treble controls | 5. LED screen | 6. Media player volume controls
7. Play / pause button | 8. Track skip buttons | 9. Player mode button | 10. USB slot | 11. SD card slot | 12. Power button

Rear Panel



1. Mains power input and fuse holder | 2. Power amplifier outputs | 3. Output impedance selector switch | 4. Stereo RCA output
5. Stereo RCA AUX input | 6. XLR/TRS combo MIC 2 input | 7. MIC 1 phoenix input | 8. MIC 1 phantom power and priority input setting dip switches

Operation

Media Player Functions

LED SCREEN

LED screen displays main information about media player status: track number and playing time, media player volume level.

MEDIA PLAYER VOLUME CONTROL

These buttons adjust the sound level of internal media player. Further loudness adjustments can be done with music level knob on the front panel.

PLAY/PAUSE

Start or pause player.

TRACK SKIPPING

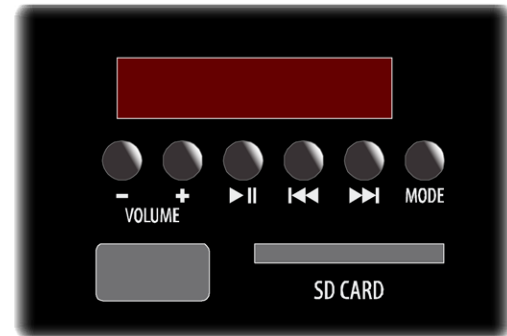
Short press of track skip buttons will change currently playing track to previous or next track.

MODE

Short press of this button will change media player source between USB and SD card.

Long press will switch media player OFF or ON. When media player is in OFF mode, LED screen will indicate "OFF".

Media player will also switch off when AUX input is selected as a music source.



Operation

Front panel functions

MIC 1 / MIC 2 LEVEL CONTROLS

Rotary knobs for adjusting volume level of the MIC 1 and MIC 2 inputs.

MUSIC SOURCE SELECT SWITCH

Switch for selecting music source from either AUX input or media player.

MUSIC LEVEL CONTROL

Rotary knob for adjusting level of music source, previously selected with music source select switch.

BASS & TREBLE TONE CONTROLS

Tone controls provide attenuation of bass and treble response. The flat position is obtained when the knobs are set to middle position. Turn the knob clockwise to raise tone level approximately +10 dB; turn counterclockwise to lower tone level by approximately -10 dB.

POWER SWITCH

Switches device ON / OFF. The button is LED-illuminated when the device is ON

Back panel functions

MAIN POWER CONNECTOR AND FUSE

Power connector for mains power, combined with fuse holder. Use only the same type of fuse that is written on the device.

AMPLIFIER OUTPUT

DMPA series devices have three audio outputs for different impedance speakers and audio lines: 4Ω, 70V and 100V. Only one output can be used at the time. Operating amplifier with more than one output may cause damage the amplifier or connected speakers.

AMPLIFIER OUTPUT IMPEDANCE SWITCH

Switch amplifier between 4Ω and 70V / 100V output impedance modes, corresponding to the connected output.

LINE LEVEL AUDIO OUTPUT

RCA stereo output for connecting device to external audio amplifier or other equipment.

AUX INPUT

RCA stereo input for connecting external audio source.

MIC INPUTS

Two microphones can be connected to device: MIC 1 using phoenix connector, MIC 2 using XLR / TRS combo connector.

MIC 1 PHANTOM POWER AND INPUT PRIORITY

MIC 1 input can provide 24V phantom power for condenser microphones. This input can also have a priority over other sources (when activated, it mutes other sounds).

General Specifications

DMPA Media Player Amplifier

	DMPA 60	DMPA 120	DMPA 240
Power supply	110~240 VAC +10/-15%, 50Hz/60Hz		
Output power	60W	120W	240W
Maximum power consumption	170VA	225VA	400VA
Phantom power voltage	MIC 1 only, 24VDC +/-5%		
Total harmonic distortions	100V output: < 1% (100 Hz ~ 15KHz) 70V output: <1% (100 Hz ~ 15KHz) 40Ohm output: <1% (20 Hz ~ 20KHz) LINE OUT: <1% (20 Hz ~ 20KHz)		
Limiter	Input: level Up 10dB@1kHz Output: <+1 dB, THD<1%		
Microphone input sensitivity	-56dB (1.5mV) +1/- 3dB		
Priority trigger level	MIC 1: 0.3~0.8mV		

RCA input sensitivity	-6dB (500mV) +1/- 3dB		
S/N ratio	MIC 1 & 2: > 60dB LINE: >70dB Media player: > 60dB		
Frequency response	MIC 1 & 2: 80~15KHz +1/-3dB AUX IN: 20~20kHz +1/-3dB Media player: 80~16kHz +/-3dB		
Equalizer	Bass: 100Hz +/-10dB(+/-2dB) Treble: 10kHz +/-10dB(+/-2dB)		
Dimensions	44 x 215 x 315 mm (19" 1/2 wide, 1U high, with feet)		
Weight	1.95 kg	2.60 kg	3.05 kg

The specifications are correct at the time of printing this manual. For improvement purposes, all specifications for this unit, including design and appearance, are subject to change without prior notice.