

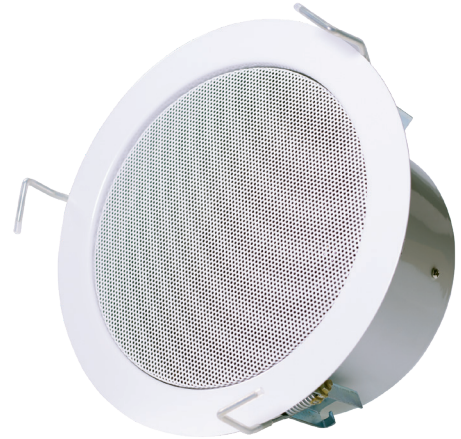


**VOICE ALARM A/B-CEILING LOUDSPEAKER
FOR FIRE DETECTION AND ALARM SYSTEMS**

RGS8FTAB/EN



The RGS8FTAB series is made of metal, highly efficiency, and contains two independent 3,5" speaker drivers with 2x 6 W transformer. RGS8FTAB/EN includes 2x ceramic block and 2x thermal fuse. This speaker contains a metal fire dome, it has an improved mounting system with 3 spring clamps with cropped leg springs, increased clamp force and shortened tension distance. This allows a quick and easy mounting. The high quality broadband chassis and transformer make part of the chassis. The grill can be removed from the front side.



**EN54-24:2008
0359-CPR-00636
TYPE A**

● Standard	Compliant to EN54-24 Compliant to BS5839:8
● Electrical	
Rated power, Watts	2x(6)
Tappings 100 Volt line, Watts	2x(6/3/1.5/0.75/0.25)
Transformer Impedance, Ohms 100 Volt	2x(1.67k/3.33k/6.66k/13.3k/40k)
Tappings 70.7 Volt line, Watts	2x(3/1.5/0.75/0.375/0.125)
Driver impedance, Ohms	2x(8)
Effective Frequency Range, Hz (BSEN60268-5)	300 - 17,500
S.P.L. @ 1 m, 1 Watt, dB, Octave, 100 Hz-10 kHz	82
S.P.L. @ 1 m, Full power, dB, Octave, 100 Hz-10 kHz	92
S.P.L. @ 4 m, 1 Watt, dB, 1/3 Octave, 100 Hz-10 kHz	82
S.P.L. @ 4 m, Full power, dB, 1/3 Octave, 100 Hz-10 kHz	90
Dispersion at 1k/2k Hz, Degrees	147/66 Horizontal 151/73 Vertical
● Environmental	
IP-rating	21
Min/Max amb temp	-10°C to 55°C
Relative humidity	≤95%
● Mechanical	
Dimensions	Ø265 x 107
Net weight, kg	2.15
Colour (Unless Specified)	White, RAL9016
Material	Steel, White Paint
Mounting	Bayonet System with 3 spring
Cut-out, mm	Ø238
Safety	2x Ceramic Block 2x Thermal Fuse



ATEIS Europe B.V.
Celsiusstraat 1, 2652 XN Lansingerland, Netherlands
Phone +31 (0)10 208 86 90, www.ateis-europe.com, info@ateis-europe.com





PENTON

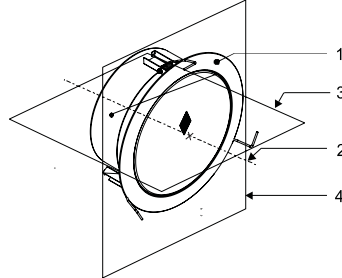
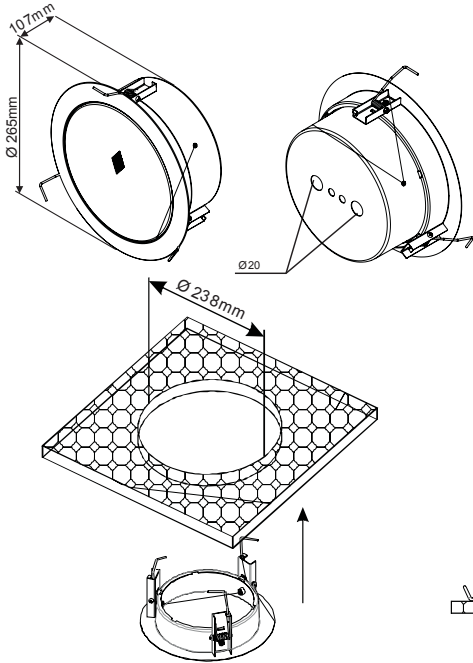
RGS8FTAB/EN

EN54-24:2008 TYPE A 0359-CPR-00636

With Transformer:

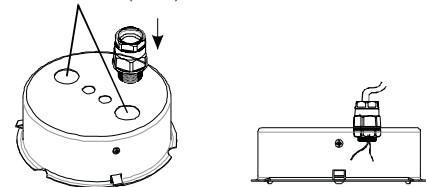
100V/70V line

	White wire plus tapping						Black
100V	0.25W	0.75W	1.5W	3W	6W	COM	
70V	0.125W	0.375W	0.75W	1.5W	3W	COM	
IMP. (Ω)	40k	13.3k	6.66k	3.33k	1.67k		



1. Loudspeaker enclosure
2. Reference axis
3. Horizontal plane
4. Reference plane

Choose one of them (Holes)

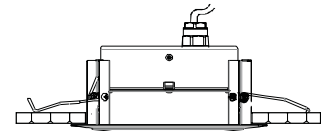
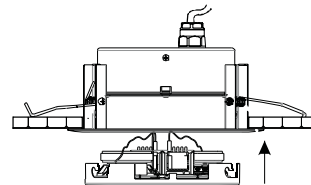
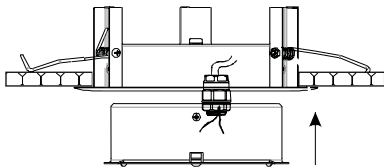


Fitting the outer frame into a ceiling

1) Cut a 238mm diameter hole paying attention to ensure that the cutout is accurately made. As if it is not, the speaker may not fit correctly into the ceiling preventing the speaker from sitting flush to the surface. Remove the grille (including the Speaker Technology) by simply unscrewing and then pulled out of the outer ring.

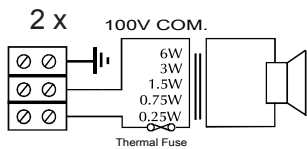
2) The springs have now pushed up and to the provided holders are engaged.
Warning: Pay particular attention that the springs now be energized by an uncontrolled and flick down, there is a risk of injury.

3) Gland the installation cable into the fire dome using a suitably 20mm gland. Insert the fire dome to the outer ring by aligning the notches on the fire dome to the black cylindrical dots on the outer ring. Once the fire dome is properly installed, the springs on the fire dome will engage and lock onto the outer ring.



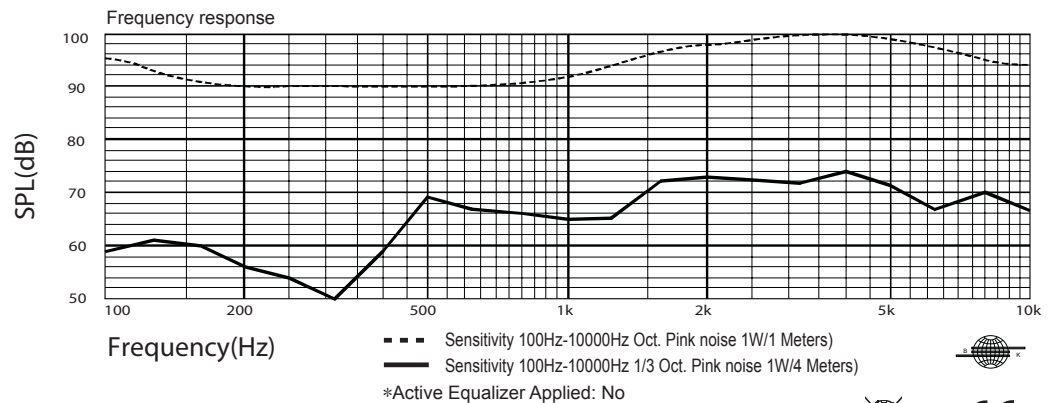
4) Connect the speaker to the cable with your required watt as shown on the circuit diagram.

5) Insert the speaker to the outer ring horizontally, rotate speaker till it mount on the cylindrical dots of the outer ring.



Circuit Diagram

RGS8FT AB/EN



Disclaimer: We reserve the right of changes and errors.



ATEIS Europe B.V.
 Celsiusstraat 1, 2652 XN Lansingerland, Netherlands
 Phone +31 (0)10 208 86 90, www.ateis-europe.com, info@ateis-europe.com

